



Finest Quality, from *Union Special*
SINCE 1881

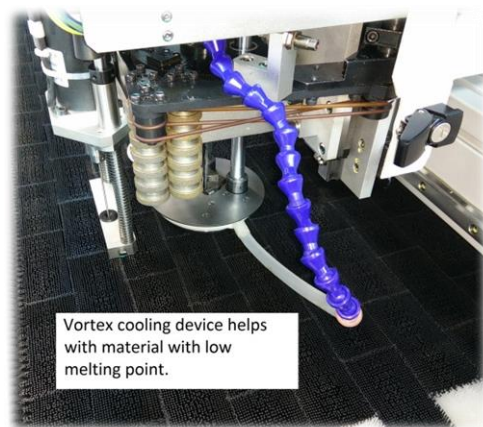
Automatic Cutting Machine US-HC SERIES Multi-Ply Cutter



The US-HC Series is a high-quality, high-precision automatic cutter but at an affordable price. Innovative cutter head controls and knife sharpening design means you will get clean cuts and longer knife wear. The intelligent cut software allows for a wide range of adjustments to optimize the cutting for your application. While running, the low noise level is result of the high efficiency vacuum pump and synchronous belt drive. The US-HC offers variety of cutting table widths and other options to meet your application.

Features:

- Longer knife life. Adjustable knife speed and optimum knife sharpening technique helps the blade last longer. The diamond-dusted grinding stones sharpen on both sides of the blade at intervals you set. These grinding stones can last up to 6 months based on sharpening interval.
- A short knife reduces the knife deflection and bending of the knife, resulting in better cut quality and longer knife wear.
- Low noise due to synchronous drive belt (vs. chain) and high-efficiency vacuum pump.
- Lower spare parts price, parts consumption and maintenance costs vs. competition
- Heavy duty design
- Heavy duty, long lasting bristles in cutting area
- Variety of options in order to meet your application; including cutting area width/length, cutting height, continuous feed while cutting, moveable body, drills, camera and extra heavy-duty cutting head for thick cutting demands.



US-HC Multi-Ply Cutter Numbering System:

		US	HC	17	05	L	J	S
		US - Union Special						
		HC - Mass Production						
		Maximum Width (cutting area) 17 = 1.7 m, 20 = 2.0 m, 2.3m, 3.2m, 4.0 m						
		Maximum Height Available height: 5 = 5 cm, 7 = 7 cm, 11 = 11 cm						
Options	L = Longer cutting area 3m, Normal is 2m							
	J = Enhanced cutting for thick & hard material (stronger head)							
	M = Moveable, wheel on bottom and rides on customers rail							
	T = Punch, then rotate and cut holes to different size							
	S = Safety sensor for automatic shutoff if beam is broken							
		G = Camera to recognize stripes in fabric to avoid cutting the stripes.						

Additional options available

1) Overall absorption bed - vacuum stays on while feeding fabric (for continuous feed)

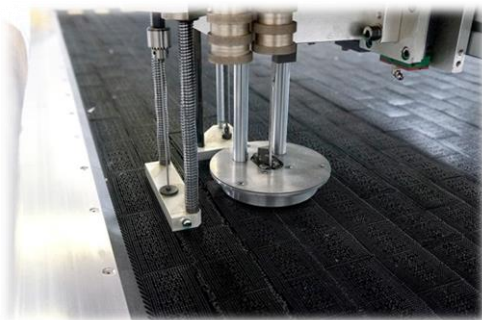
2) Barcode System - the software will automatically label the piece with barcode

3) Cooling Device - helps with fabric with low melting point

US-HC Multi-Ply Cutter Technical Specifications:

Parameter		US-HC1707J	US-HC1707LJ	US-HC2007LJ	US-HC2307LJ	US-HC3205
Available Cutting Area	Metric	2.0m x 1.6m	3.15m x 1.6m	3.15m x 1.9m	3.15m x 2.2m	3.2m x 3.1m
	English	79" x 63"	124" x 63"	124" x 75"	124" x 86"	126" x 122"
Maximum Cutting Height (after absorption)		70mm (2.75")				50mm (2")
Maximum Cutter Head Speed		45m/min (147 ft/min)				
Power Supply		3 Phase - AC220V/60hz				
Compressed Air Source	Air Pressure	0.55 MPa (80 psi)				
	Air flow	160 L/min (5.65 cfm)				
Weight			3000kg (6614lbs)	3200kg (7055lbs)	3400kg (7496lbs)	5000kg (11,023lbs)

** Machines can be customized according to the actual needs of the customer, but weight and out dimensions change



One Union Special Plaza, Huntley, IL 60142, USA
 Phone: U.S.: 800-344-9698, Outside U.S.: 847-669-4500
 Fax: 847-669-4239, E-mail: sales@unionspecial.com
 Website: www.unionspecial.com

 **Union Special**
 AUTOMATIC CUTTING SOLUTIONS